

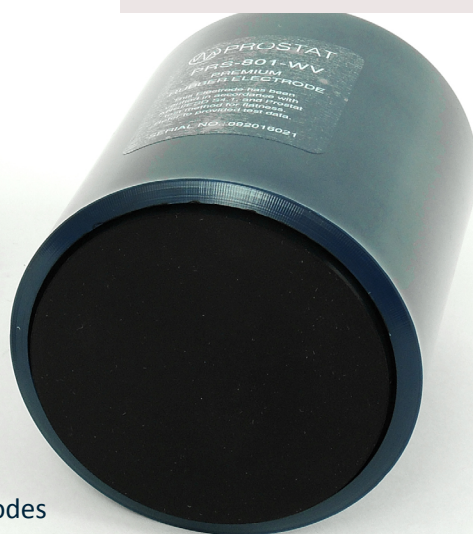
# PRS-801-WV

## Premium Conductive Rubber Electrodes



Premium 5 pound Electrodes that meet ANSI/ESD S4.1 Requirements

- Each electrode has a resistance of less than 10 ohms
- Flatness is measured and within Prostat's Specs
- Capped to protect the pad against deformation
- Certificate of Calibration provided for each Premium Electrode



PRS-801-WV Premium Conductive Rubber Electrodes

### Ideal when Qualifying or Certifying Material & Installation

The PRS-801-WV Premium Conductive Rubber Electrodes are ideal for qualifying or certifying newly installed ESD Floors, Worksurfaces and other ESD control products. While virtually all 5 pound, 2.5 inch electrodes in today's industry are perfect when delivered to their end users, over time they may change considerably. The Prostat Premium Electrodes are measured as described in ANSI/ESD S4.1 for electrode diameter, durometer and resistance of the pad. In addition, these electrodes are electrically tested for flatness using the Prostat PRV-813 Verifier. A certificate of calibration including all data, traceable to NIST is provided at no additional cost.



more info at:  
[www.prostatcorp.com](http://www.prostatcorp.com)

call: +1 630 238-8883  
Toll Free in USA: +1 855-STATIC1  
(782-8421)

# Kit Options

## PRV-815 Premium Electrode Qualification Kit

This kit includes the PRV-813 Conductive Rubber Electrode Verifier which is precision fabricated to electrically measure the surface flatness of the electrode's conductive rubber surface to within approximately 0.003 inch. Considering surface irregularities, flatness insures the electrode's ability to make full contact with a surface under test.

The fixture includes 20 contact pads, each connected to a 10 megohm [ $1.0 \times 10^7$  ( $\pm 1\%$ ) ohm] resistor, all connected in parallel to each other. If an electrode surface is uniformly flat and makes contact with all 20 pads, the electrode resistance will be between  $4.95 \times 10^5$  to  $5.05 \times 10^5$  ohms. The approximate range of the PRV-813,  $5.00 \times 10^5$  ohms  $\pm 1\%$ .

### Use to Qualify or Certify:

- Floors
- Worksurfaces
- Chairs
- Carts
- Conveyers
- Shelving Units



A light dressing pad is provided to allow dressing Premium Electrode when needed.



PRV-815 Premium Electrode Qualification Kit

### What's Included:

- 1 each PRV-813 Conductive Electrode Verifier
- 2 each PRS-801-WV Premium Rubber Electrodes
- 1 each Light Dressing Pad
- 1 each Carrying Case
- Certificate of Calibration Traceable to NIST for both the Verifier and the Premium Electrodes



Optional: PAS-853B Wide Range Ohmmeter



more info at:  
[www.prostatcorp.com](http://www.prostatcorp.com)

©2016 Prostat Corporation. All rights reserved. Prostat and the Prostat Logo are the registered trademarks of Prostat Corporation.

call: +1 630 238-8883  
Toll Free in USA: +1 855-STATIC1  
(782-8421)